



■ river settings



■ next to Red Willow Trail



■ walk to shopping

■ panoramic views



Venue

*It's all about
LOCATION...*



JILL THOMAS

780-458-4800

www.jillthomas.com



VENUE

location, location, location
Luxury & Lifestyle



Timeless Style &

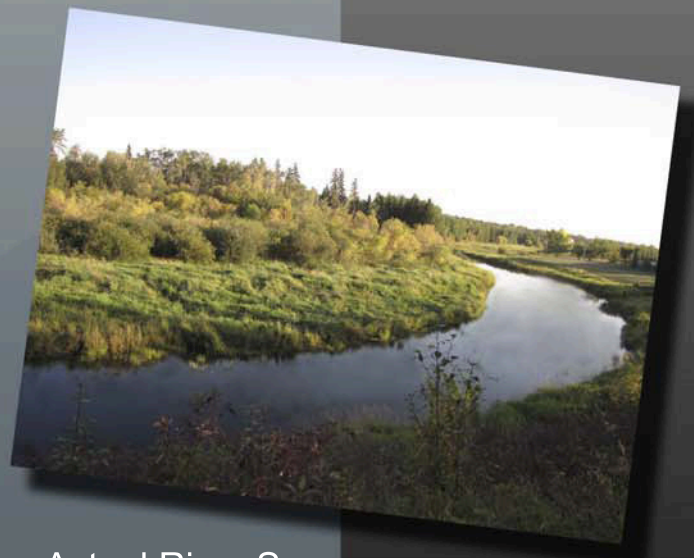
Luxurious Modern Comfort

- Timeless Architecture by Jim Der of Roth & Der Architects
- Engineered steel and concrete quality
- A spectacular location along the banks of the Sturgeon River
- Fabulous views of the river scene or city lights and a detailed landscaped garden courtyard
- Walking distance to shopping, professional services and transit
- The Red Willow Trail System is just steps from your new front door
- Extensive landscaping for resident's privacy and view



Location

Courtyard Garden



Actual River Scene

VENUE



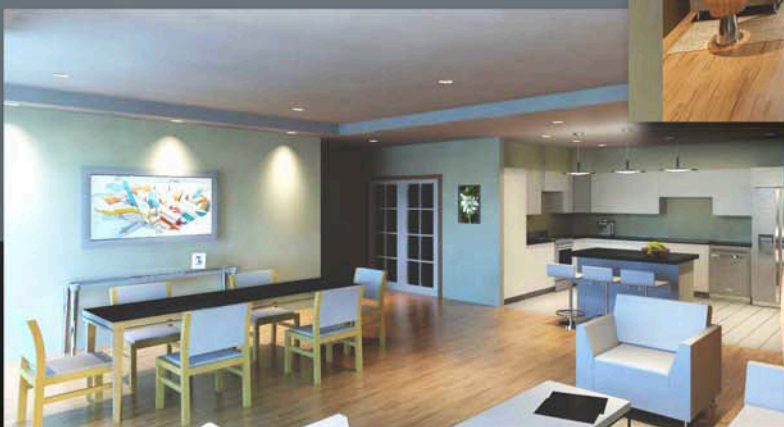
Lobby

Building Features

- Secure premium entry doors
- Modern open plan great rooms with 9 ft. ceilings
- Energy efficient Low E Argon gas filled and tinted windows
- Cushion plank hardwood, ceramic and plush carpets
- Recessed pot lighting in kitchens, bath and entry ways
- Fireplace with stylish surrounds and mantles
- California knock down ceilings
- Individual heating and air-conditioning controls
- Spacious balconies or patios
- Heated underground parking

Interior Suite Features

- Center island or peninsula style design
- Full height, custom detailed cabinetry with pantry unit
- Granite countertops with full height tile backsplash
- Under cabinet recessed lighting
- Stainless steel appliances
- Garburator



Unit

VENUE



■ Plan 5

Courtyard Level



■ Plan 7

- Over 12 different Floor plans ranging from 900 to 2200 sq.ft. including Penthouse units with Lofts

Located at 2 Inglewood Drive in St. Albert, Alberta